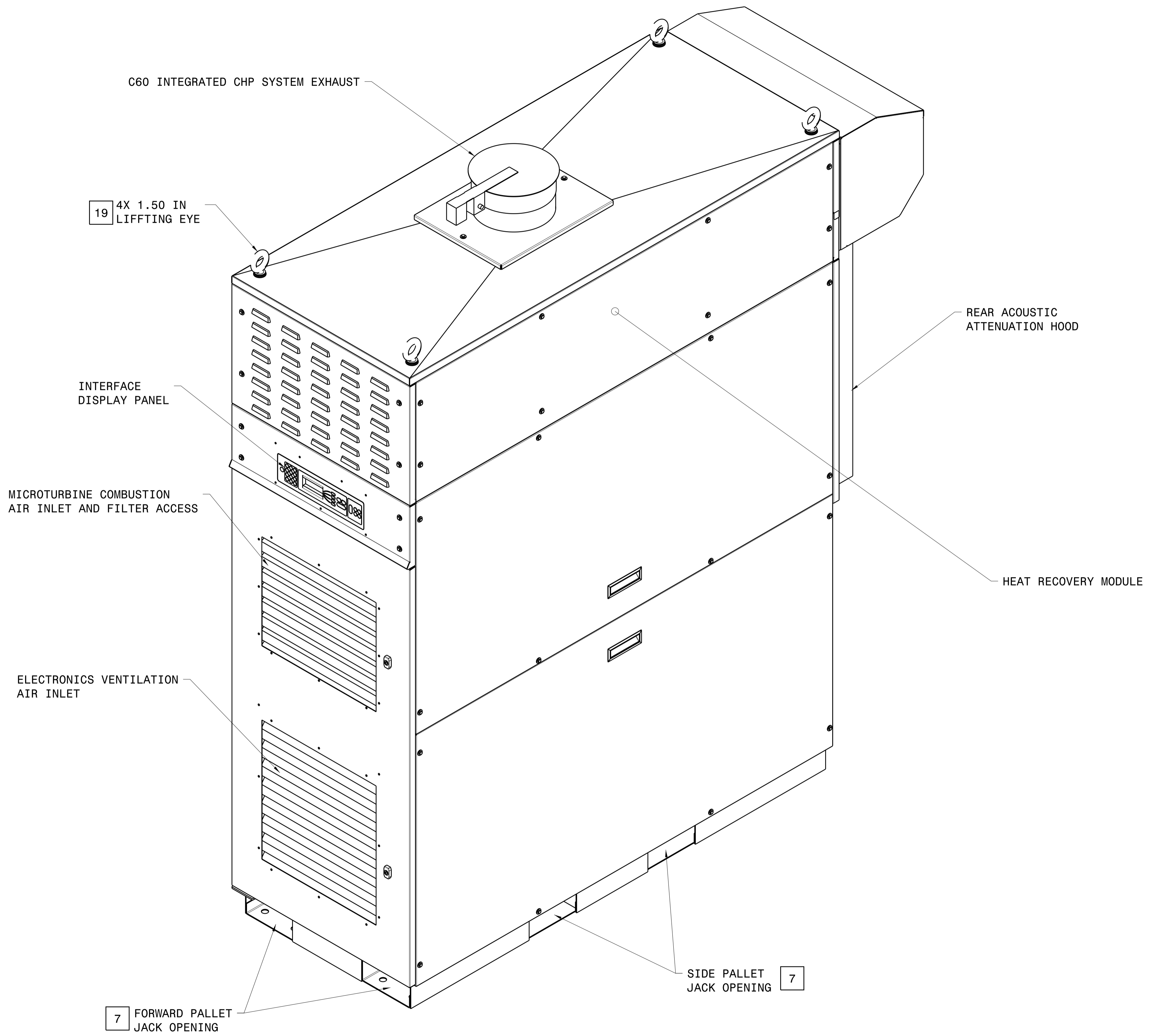


REVISIONS			
LTR	DESCRIPTION	DATE	APPROVED
A	PILOT PROD RELEASE		

**NOTICE**

THIS DOCUMENT CONTAINS INFORMATION WHICH IS BOTH CONFIDENTIAL AND PROPRIETARY TO CAPSTONE TURBINE CORP. NEITHER THIS DOCUMENT NOR THE INFORMATION CONTAINED HEREIN SHALL BE COPIED, DISCLOSED TO OTHERS OR USED FOR ANY PURPOSES BEYOND THE SPECIFIC PURPOSE FOR WHICH THIS DOCUMENT WAS DELIVERED WITHOUT THE EXPRESS WRITTEN PERMISSION OF CAPSTONE TURBINE CORPORATION.  
1995 CAPSTONE TURBINE CORPORATION - ALL RIGHTS RESERVED

- UNLESS OTHERWISE SPECIFIED
- 1 INTERPRET DRAWING PER ANSI Y14.5M-1982
  - 2 ALL DIMENSIONS ARE IN INCHES[MM]
  - 3 FRONT, SIDE AND REAR CLEARANCES SHOULD BE PROVIDED FOR SERVICE ACCESS. LOCAL ELECTRICAL CODES SHALL PRESCRIBE MINIMAL REAR CLEARANCE FOR ACCESS TO JUNCTION BOX.
  - 4 MOUNT LEVEL WITHIN 28 GRADE. SUFACE MUST DRAIN TO PREVENT STANDING WATER.
  - 5 REFER TO PRODUCT CATALOGUE FOR OPTIONAL ACCESSORIES.
  - 6 REFER TO CAPSTONE TURBINE FUEL TECHNICAL REFERENCE MANUAL 410002-XXX.
  - 7 LIFT UNIT WITH FIVE INCH WIDE FORK LIFT/PALLET JACK BLADES.
  - 8 FOR OVERHEAD LIFTING OF UNIT; STRAPS MUST NOT EXCEED 30° FROM VERTICAL, ALL FOUR EYE BOLTS MUST BE USED. ORIENTATON SHOWN.
  - 9 ADDITIONAL MICROTURBINE PRODUCT SPECIFICATION INFORMATION IS CONTAINED IN THE C30/C60 PRODUCT INFORMATION SPECIFICATION 460000-XXX.
  - 10 ADDITIONAL MICROTURBINE ELECTRICAL INFORMATION IS CONTAINED IN THE C60 ELECTRICAL TECHNICAL REFERENCE 410001-XXX.
  - 11 ADDITIONAL MICROTURBINE PERFORMANCE INFORMATION IS CONTAINED IN THE C60 PERFORMANCE TECHNICAL REFERENCE 410005-XXX.
  - 12 ADDITIONAL iCHP PRODUCT SPECIFICATION INFORMATION IS CONTAINED IN THE C60 INTEGRATED CHP PRODUCT INFORMATION SPECIFICATION 460025-XXX.
  - 13 ALL DIMENSIONS ARE NOMINAL AND ARE TO BE USED AS REFERENCE FOR BUILDING PURPOSES ONLY, UNLESS OTHERWISE SPECIFIED ON DRAWING.
  - 14 APPLIES TO GRID CONNECT SYSTEMS ONLY.
  - 15 APPLIES TO GRID CONNECT SYSTEMS ONLY.
  - 16 LIFTING EYE ASSY, 515002-100, MAY BE LOOSENED TO EASE SIDE PANEL MOUNTING.
  - 17 ADD RECTOR SEAL No.5 (515911-001) TO ALL PLUMBING JOINT FITTING.
  - 18 DIMENSIONS NOT SHOWNON SHEET 3, SEE DIMENSIONS ON SHEET 2.
  - 19 HAND TIGHTEN LIFTING EYE AND TIGHTEN AN ADDITIONAL 3/4 TO 1 TURN TO SECURE LIFTING EYE PARALLEL WITH LONG SIDE OF UNIT.

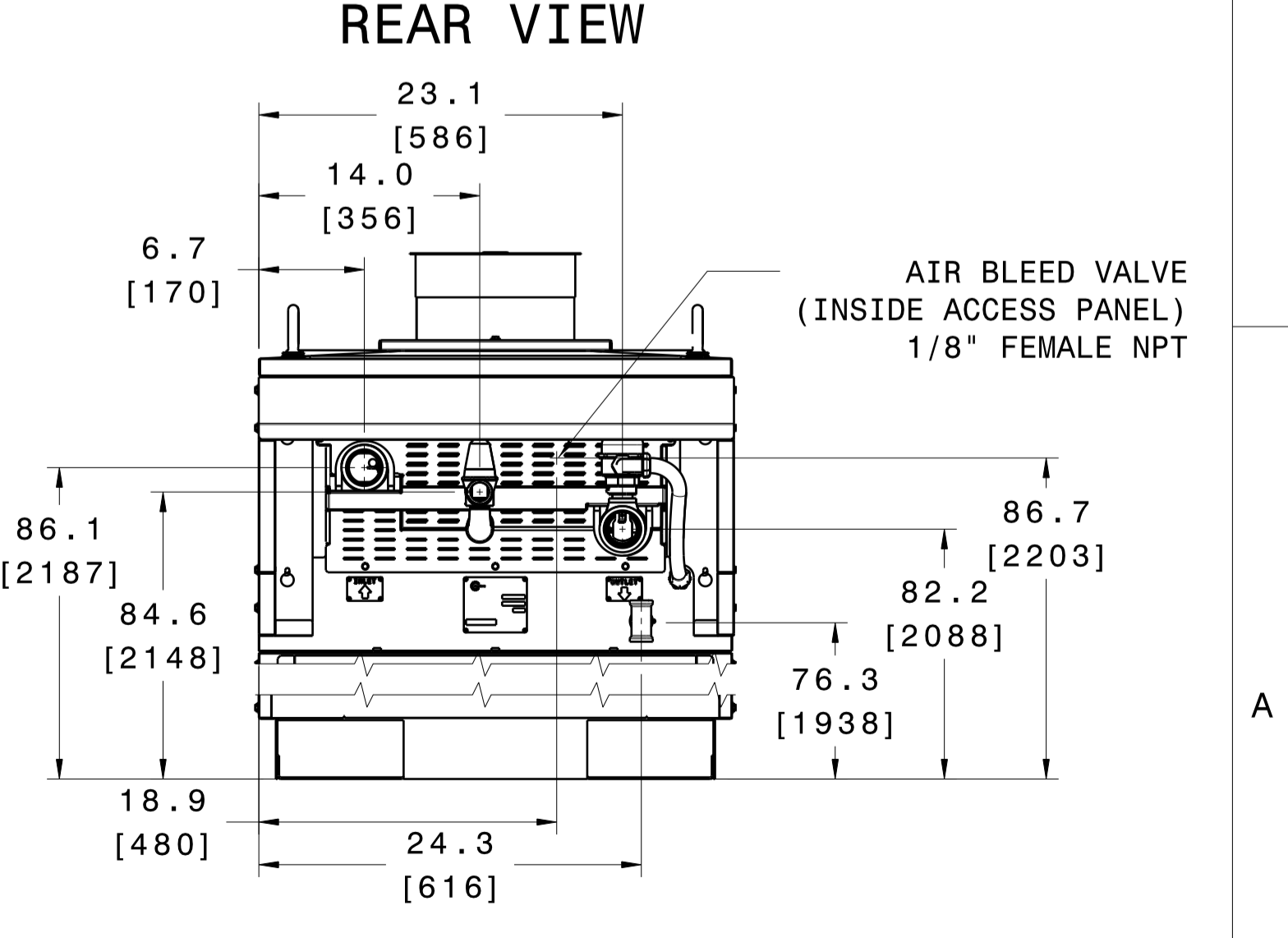
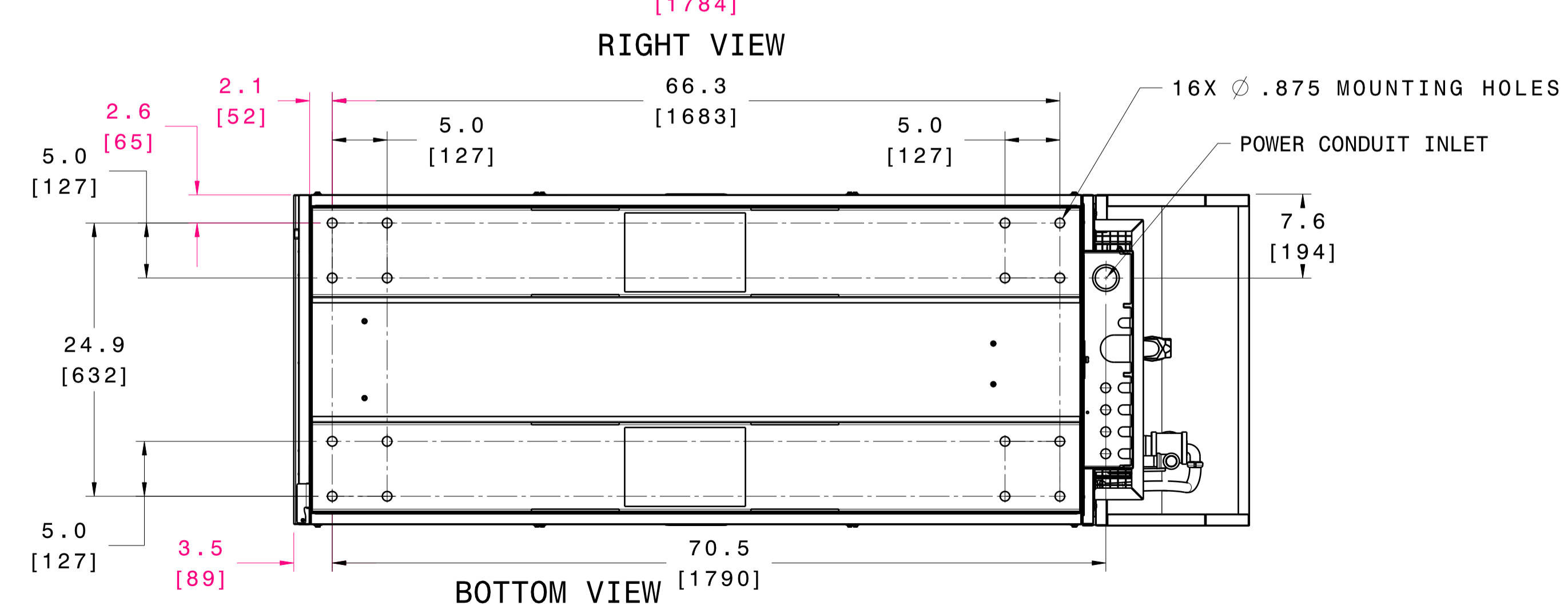
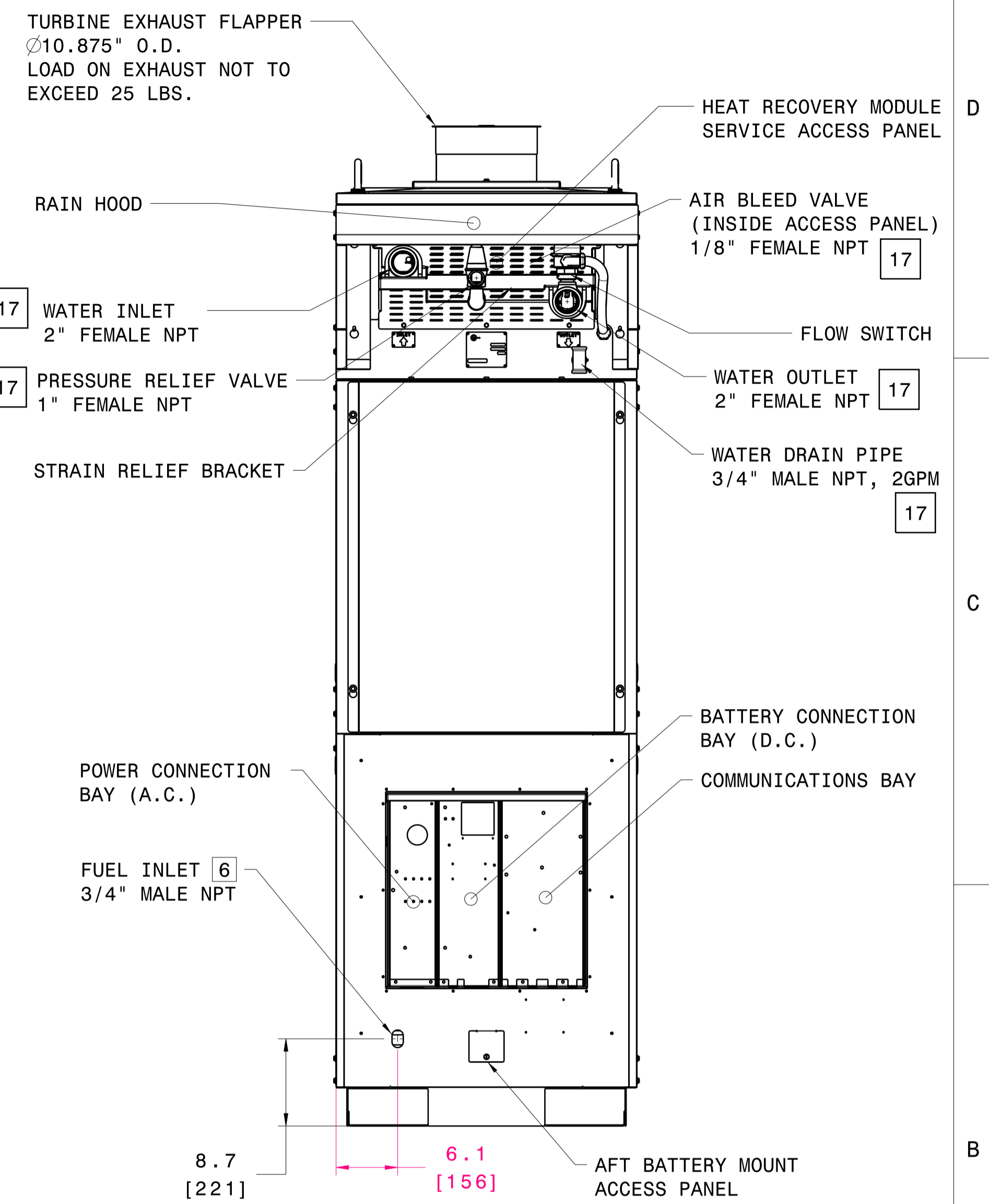
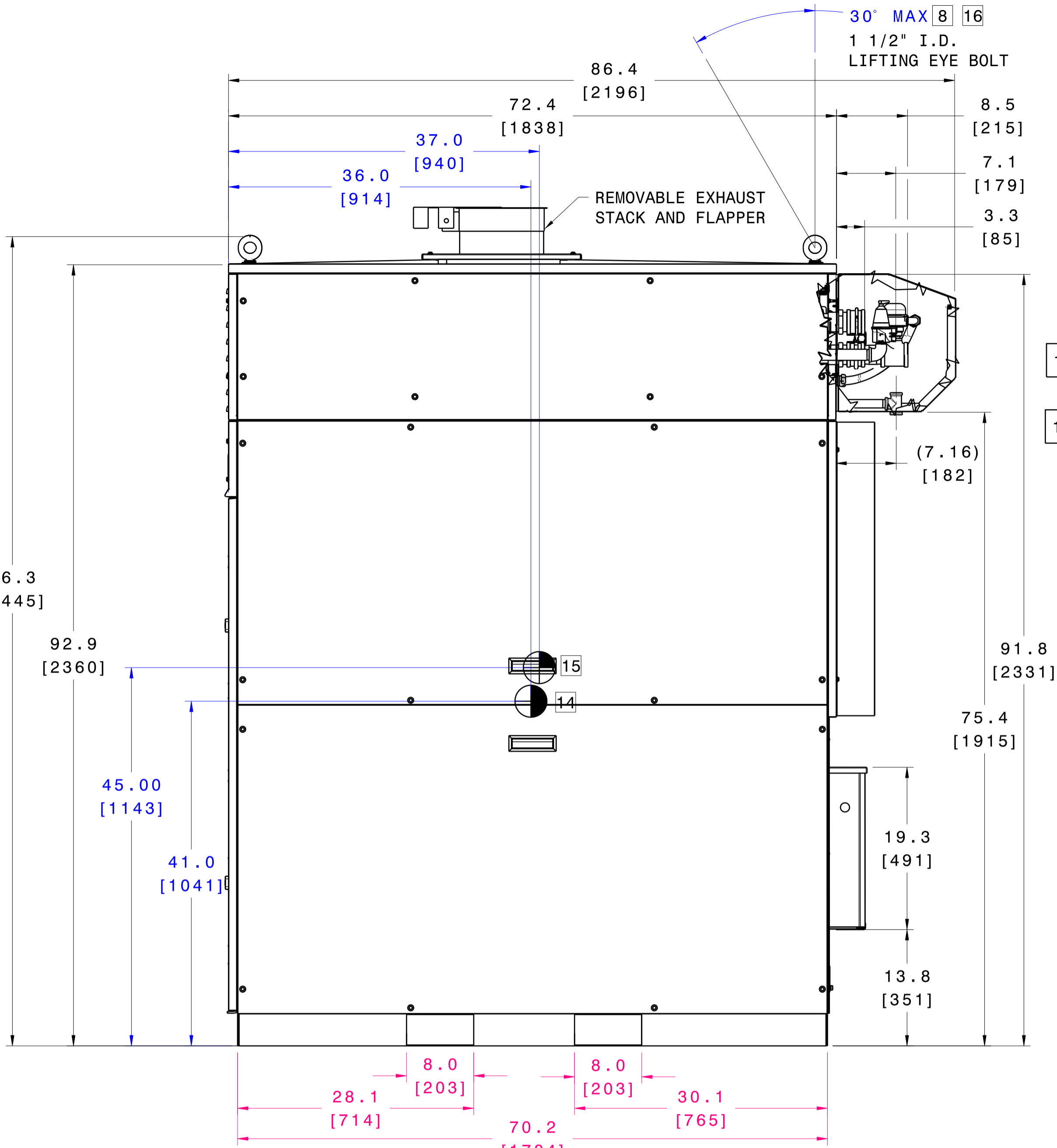
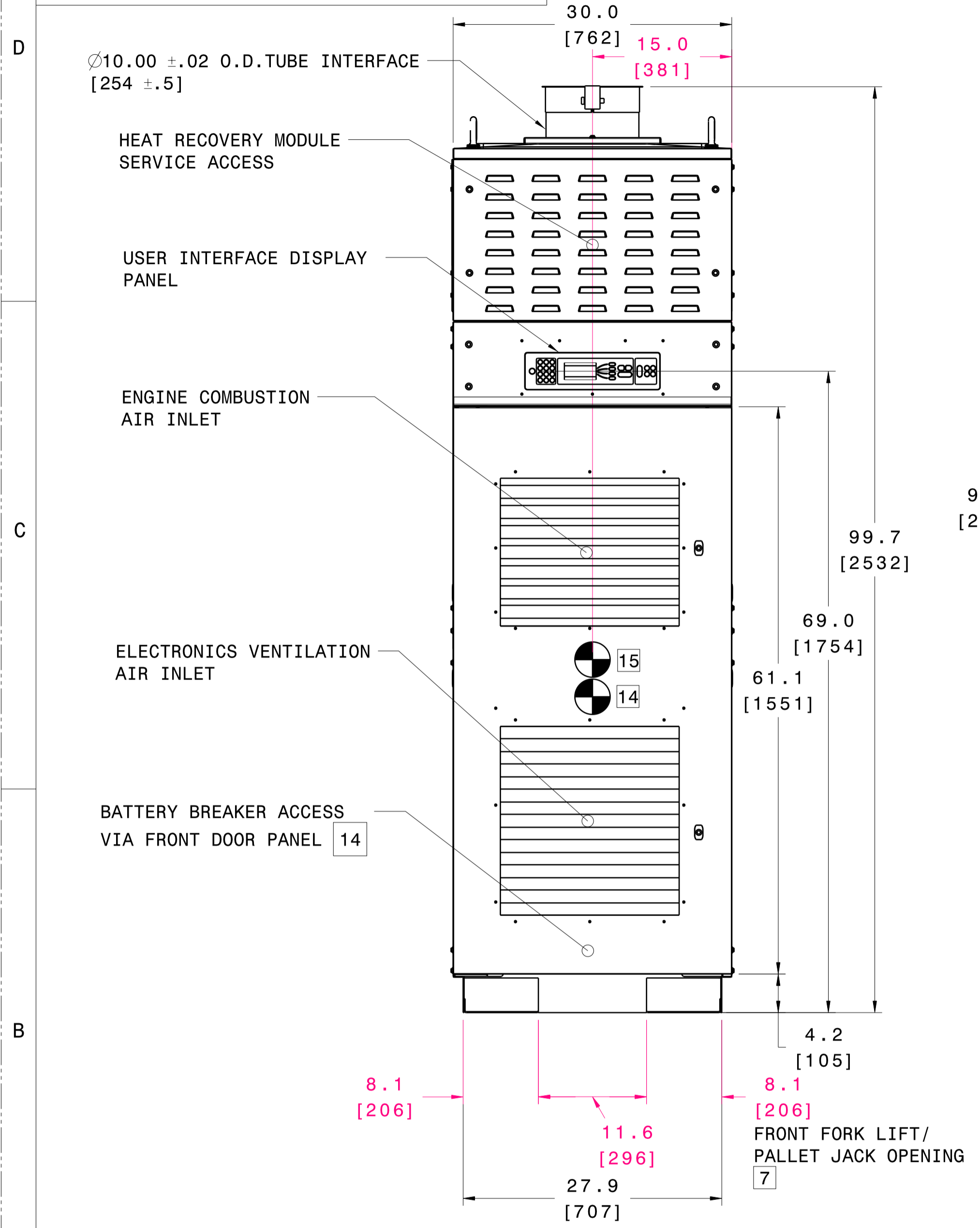


UNLESS OTHERWISE SPECIFIED DIMENSIONS ARE IN INCHES TOLERANCES ARE:		APPROVALS		DATE	 <b>Capstone Turbine Corporation</b> 21211 NORDHOFF STREET CHATSWORTH, CA 91311
DECIMALS	ANGLES	DFTG	M. CHAMAS	12/08/2005	
.XX	.03	CHKR	J. SAVAGE	12/08/2005	TITLE
+.XXX	+.010	ENG MGR	T. RUTLEDG	12/08/2005	O&I - C65 INTEGRATED ICHP
MATERIAL		COG ENG	M. CHAMAS	12/08/2005	ECO: 104043
FINISH		ISO 128		12/13/2005	SIZE
DO NOT SCALE DRAWING		SCALE	1:1		CAGE CODE
		DWG NO.	10005373		Rev.
		SHEET	1	OF	4

COPY IS UNCONTROLLED; USER IS RESPONSIBLE TO VERIFY CURRENT REVISION

**NOTICE**  
 THIS DOCUMENT CONTAINS INFORMATION WHICH IS BOTH CONFIDENTIAL AND PROPRIETARY TO CAPSTONE TURBINE CORP. NEITHER THIS DOCUMENT NOR THE INFORMATION CONTAINED HEREIN SHALL BE COPIED, DISCLOSED TO OTHERS OR USED FOR ANY PURPOSES BEYOND THE SPECIFIC PURPOSE FOR WHICH THIS DOCUMENT WAS DELIVERED WITHOUT THE EXPRESS WRITTEN PERMISSION OF CAPSTONE TURBINE CORPORATION. 1995 CAPSTONE TURBINE CORPORATION - ALL RIGHTS RESERVED

REVISIONS			
LTR	DESCRIPTION	DATE	APPROVED
SEE SHEET 1			



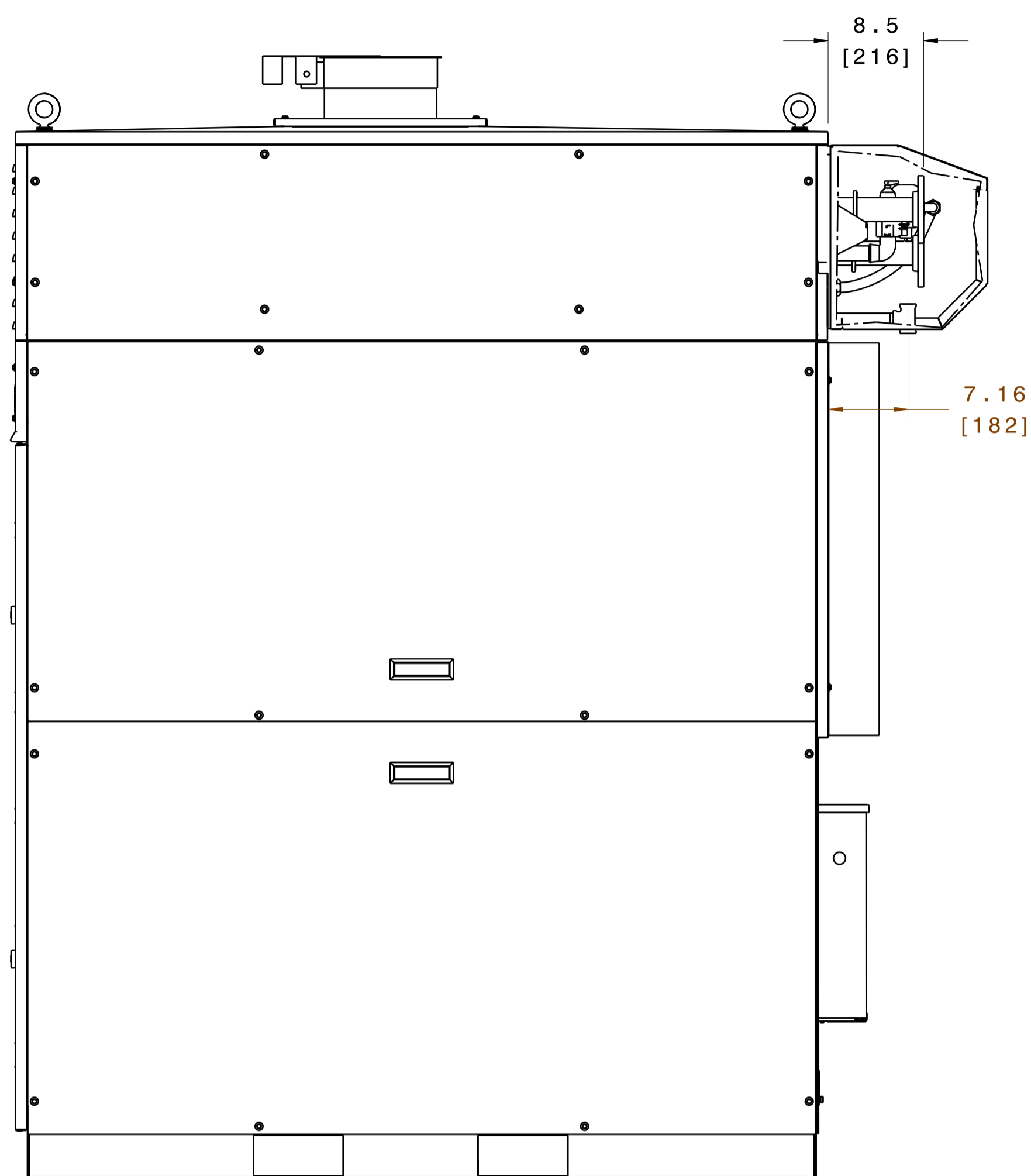
**SEE NOTE 13**

**C65 INTEGRATED ICHP  
NON-ASME**

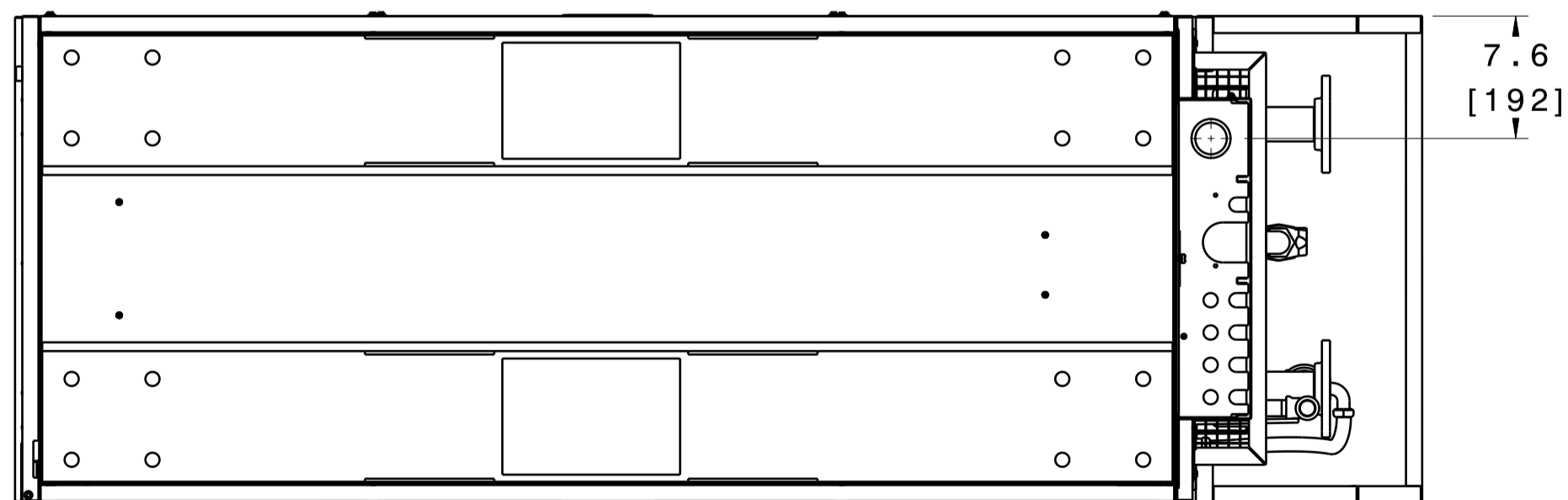
COPY IS UNCONTROLLED; USER IS RESPONSIBLE TO VERIFY CURRENT REVISION

REVISIONS			
LTR	DESCRIPTION	DATE	APPROVED
	SEE SHEET 1		

**NOTICE**  
 THIS DOCUMENT CONTAINS INFORMATION WHICH IS BOTH CONFIDENTIAL AND PROPRIETARY TO CAPSTONE TURBINE CORP. NEITHER THIS DOCUMENT NOR THE INFORMATION CONTAINED HEREIN SHALL BE COPIED, DISCLOSED TO OTHERS OR USED FOR ANY PURPOSES BEYOND THE SPECIFIC PURPOSE FOR WHICH THIS DOCUMENT WAS DELIVERED WITHOUT THE EXPRESS WRITTEN PERMISSION OF CAPSTONE TURBINE CORPORATION.  
 1995 CAPSTONE TURBINE CORPORATION - ALL RIGHTS RESERVED



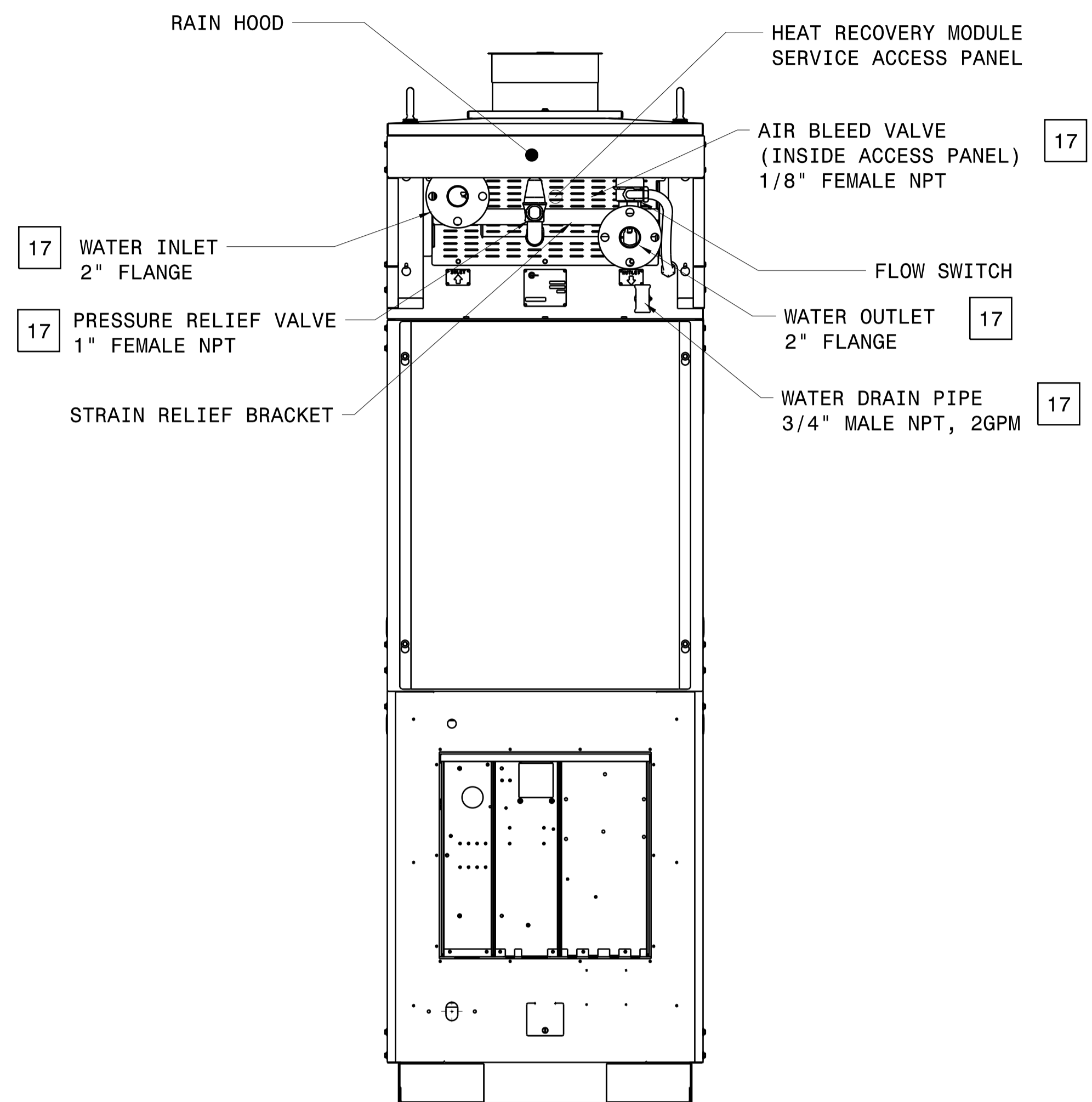
RIGHT VIEW



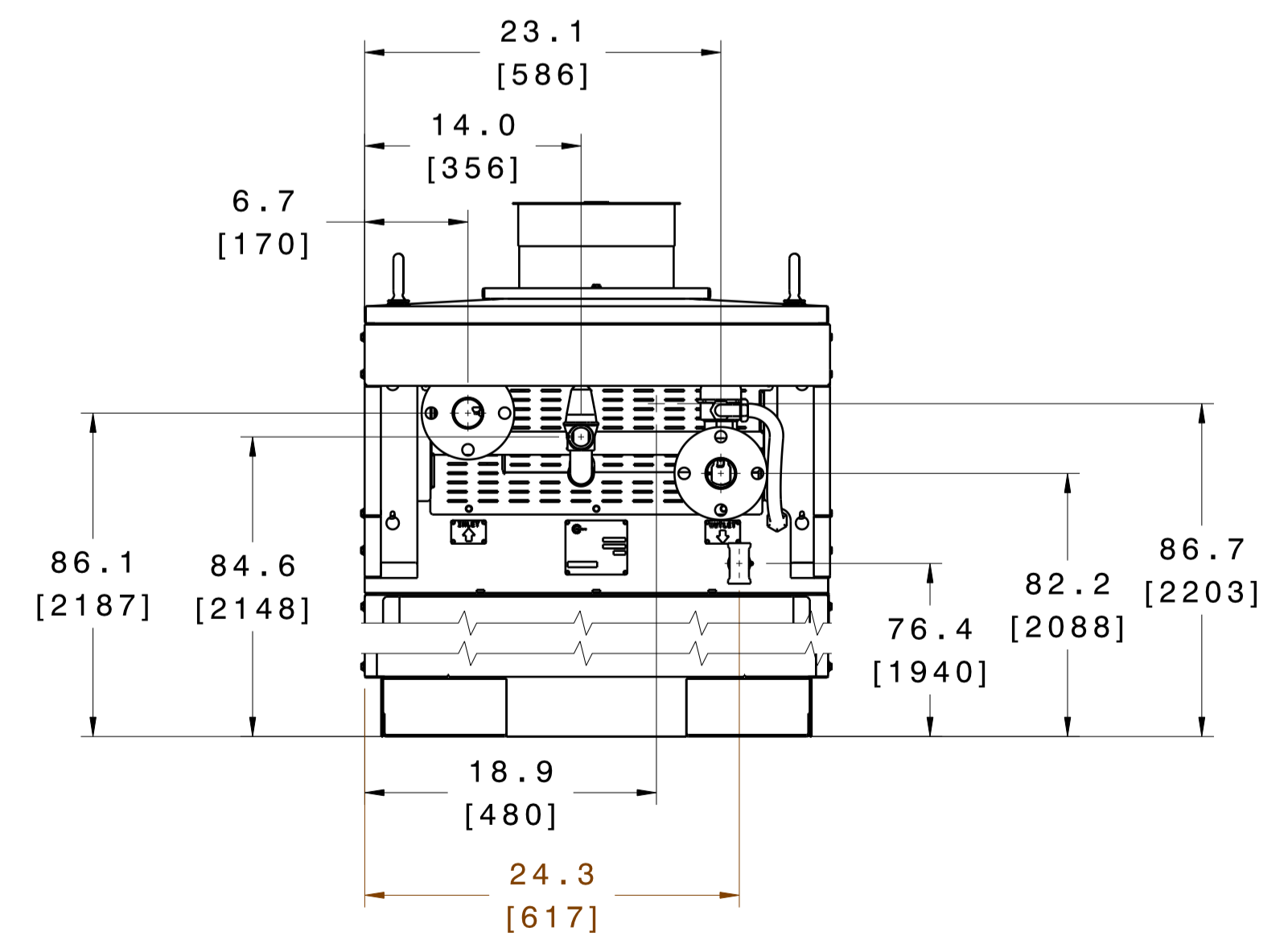
BOTTOM VIEW

C65 INTEGRATED ICHP 18  
 ASME

(SEE SHEET 2 FOR ALL OTHER DIMENSIONS)



REAR VIEW



BROKEN REAR VIEW

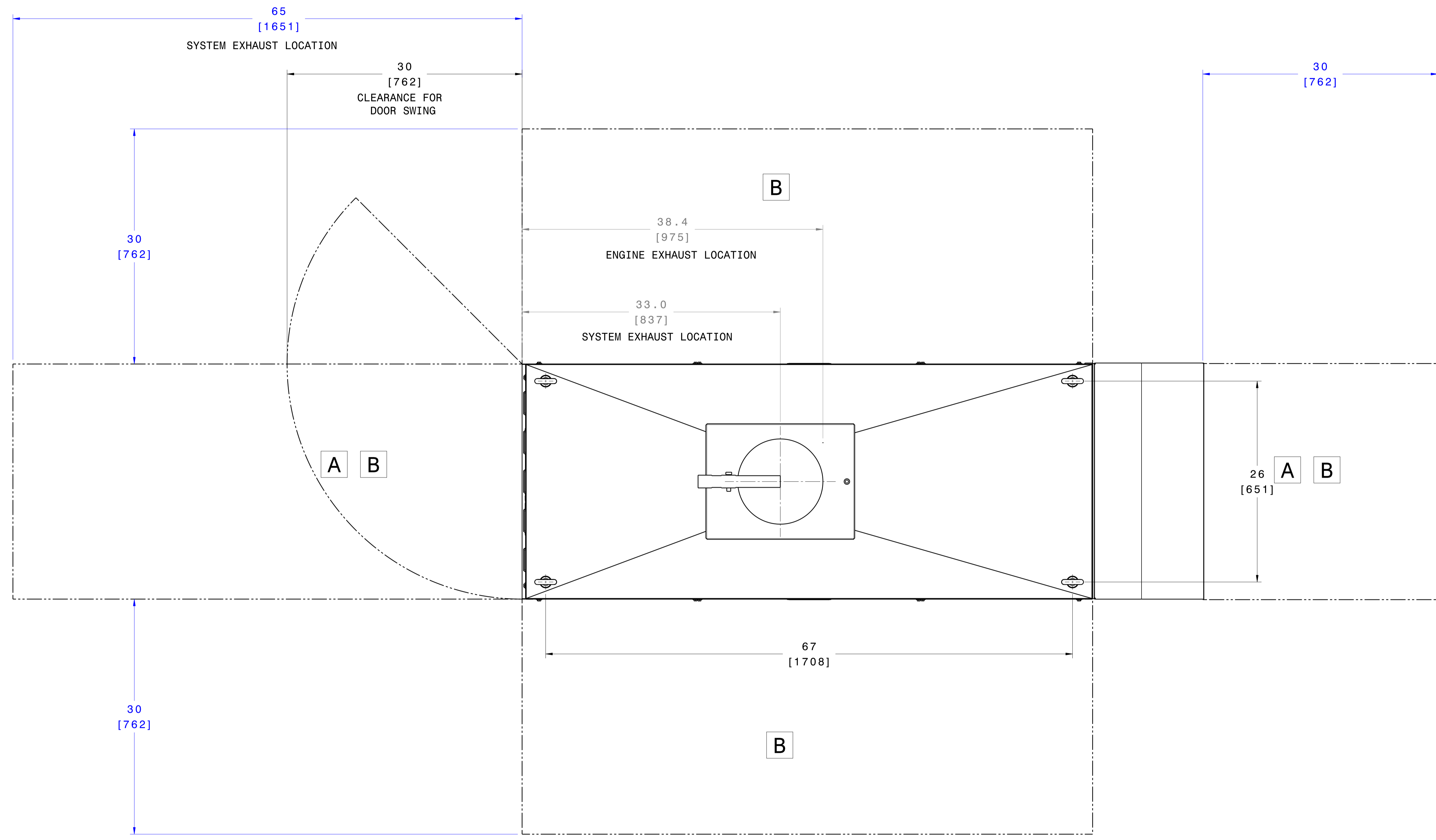
SEE NOTE 13

COPY IS UNCONTROLLED; USER IS RESPONSIBLE TO VERIFY CURRENT REVISION

DWG NO.	10005373	REV	A
SHEET	3	OF	4

REVISIONS			
LTR	DESCRIPTION	DATE	APPROVED
	SEE SHEET 1		

**NOTICE**  
 THIS DOCUMENT CONTAINS INFORMATION WHICH IS BOTH CONFIDENTIAL AND PROPRIETARY TO CAPSTONE TURBINE CORP. NEITHER THIS DOCUMENT NOR THE INFORMATION CONTAINED HEREIN SHALL BE COPIED, DISCLOSED TO OTHERS OR USED FOR ANY PURPOSES BEYOND THE SPECIFIC PURPOSE FOR WHICH THIS DOCUMENT WAS DELIVERED WITHOUT THE EXPRESS WRITTEN PERMISSION OF CAPSTONE TURBINE CORPORATION.  
 1995 CAPSTONE TURBINE CORPORATION - ALL RIGHTS RESERVED



TOP VIEW

**SERVICE CLEARANCES**

- A** REQUIRED FOR ROUTINE MAINTENANCE
- B** REQUIRED FOR OVERHAUL MAINTENANCE AND TROUBLE SHOOTING

**SEE NOTE 13**

COPY IS UNCONTROLLED; USER IS RESPONSIBLE TO VERIFY CURRENT REVISION

DWG NO.	10005373	REV	A
SHEET	4	OF	4